

# trent&steele

## INSTRUCTION MANUAL



4-Slice and 2-Slice Toasters  
Models TS45 / TS25

## Important Safety Reminders

- Do not place any objects such as toast, bread or similar on top of your toaster when in use.
- Operate the toaster on a flat level surface.
- The bread may burn, therefore do not use the toaster near or below combustible material, such as curtains.
- Do not leave your toaster unattended when in use.
- Clean crumb tray regularly.
- Do not allow crumbs to accumulate in the crumb tray.
- Do not toast stale bread, rice crackers or similar on a high setting as they may catch fire.
- **WARNING: Never attempt to extract jammed toast, crumpets or muffins with a knife or any metal object, as contact with the live element may cause electrocution.**
- Read carefully and save all the instructions provided with an appliance.
- Always turn the power off at the power outlet before you insert or remove a plug. Remove by grasping the plug - do not pull on the cord.
- Turn the power off and remove the plug when the appliance is not in use and before cleaning.
- Do not use your appliance with an extension cord unless this cord has been checked and tested by a qualified technician or service person.
- Always use your appliance from a power outlet of the voltage (A.C. only) marked on the appliance.
- This appliance is not intended for use by persons (including children) with reduced physical, sensory or mental capabilities, or lack of experience and knowledge, unless they have been given supervision or instruction concerning use of the appliance by a person responsible for their safety.
- Children should be supervised to ensure that they do not play with the appliance.
- The temperature of accessible surfaces may be high when the appliance is operating.
- Do not use an appliance for any purpose other than its intended use.
- Do not place an appliance on or near a hot gas flame, electric element or on a heated oven.
- Do not place on top of any other appliance.
- Do not let the power cord of an appliance hang over the edge of a table or bench top or touch any hot surface.
- Do not operate any electrical appliance with a damaged cord or after the appliance has been damaged in any manner.
- Do not immerse the appliance in water or any other liquid unless recommended.
- Appliances are not intended to be operated by means of an external timer or separate remote control system.
- This appliance is intended to be used in household and similar applications such as: staff kitchen areas in shops, offices and other working environments; farm houses; by clients in hotels, motels and other residential type environments; bed and breakfast type environments.
- Never leave an appliance unattended while in use.

## Features

### Self-centring bread slots

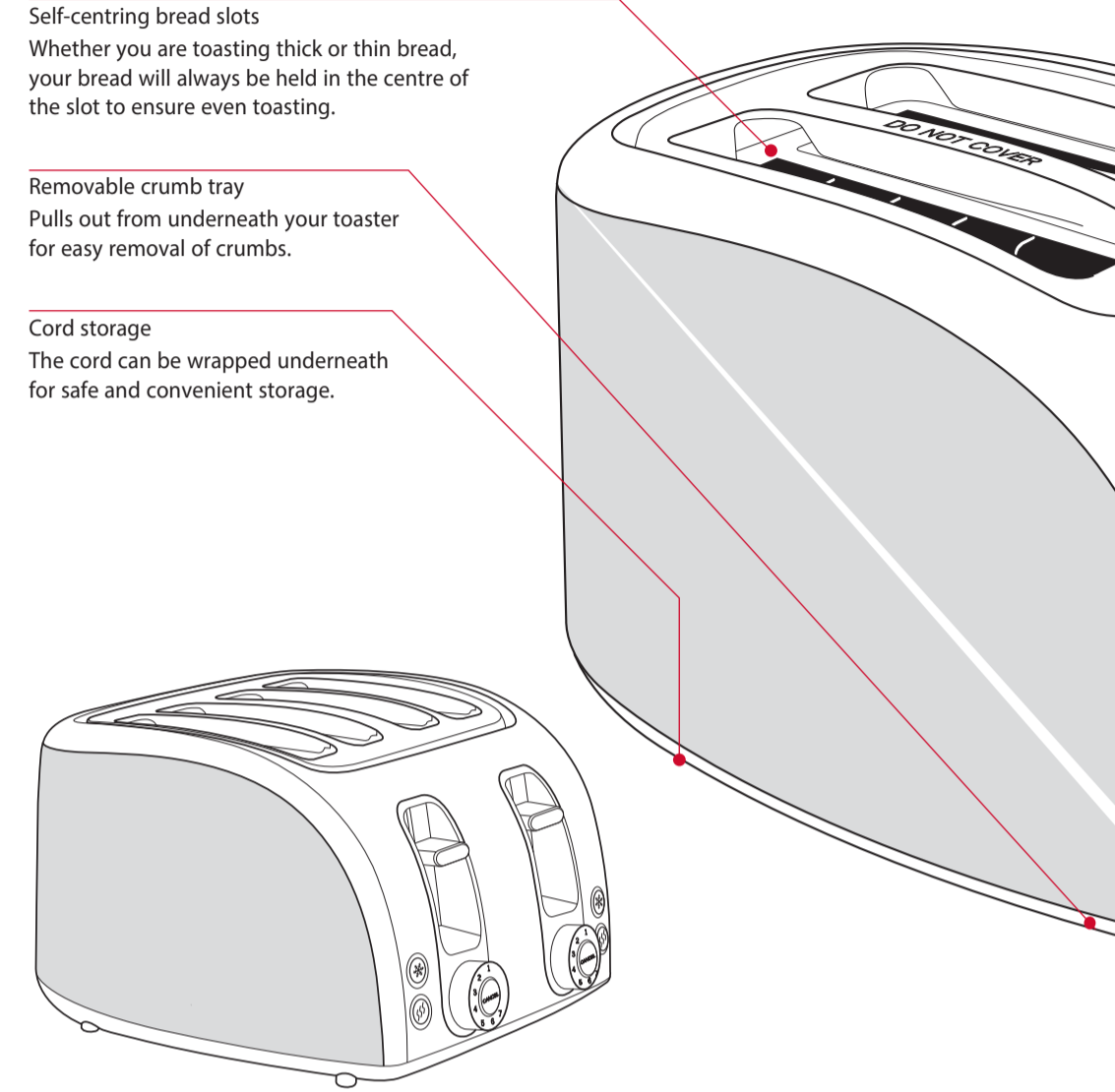
Whether you are toasting thick or thin bread, your bread will always be held in the centre of the slot to ensure even toasting.

### Removable crumb tray

Pulls out from underneath your toaster for easy removal of crumbs.

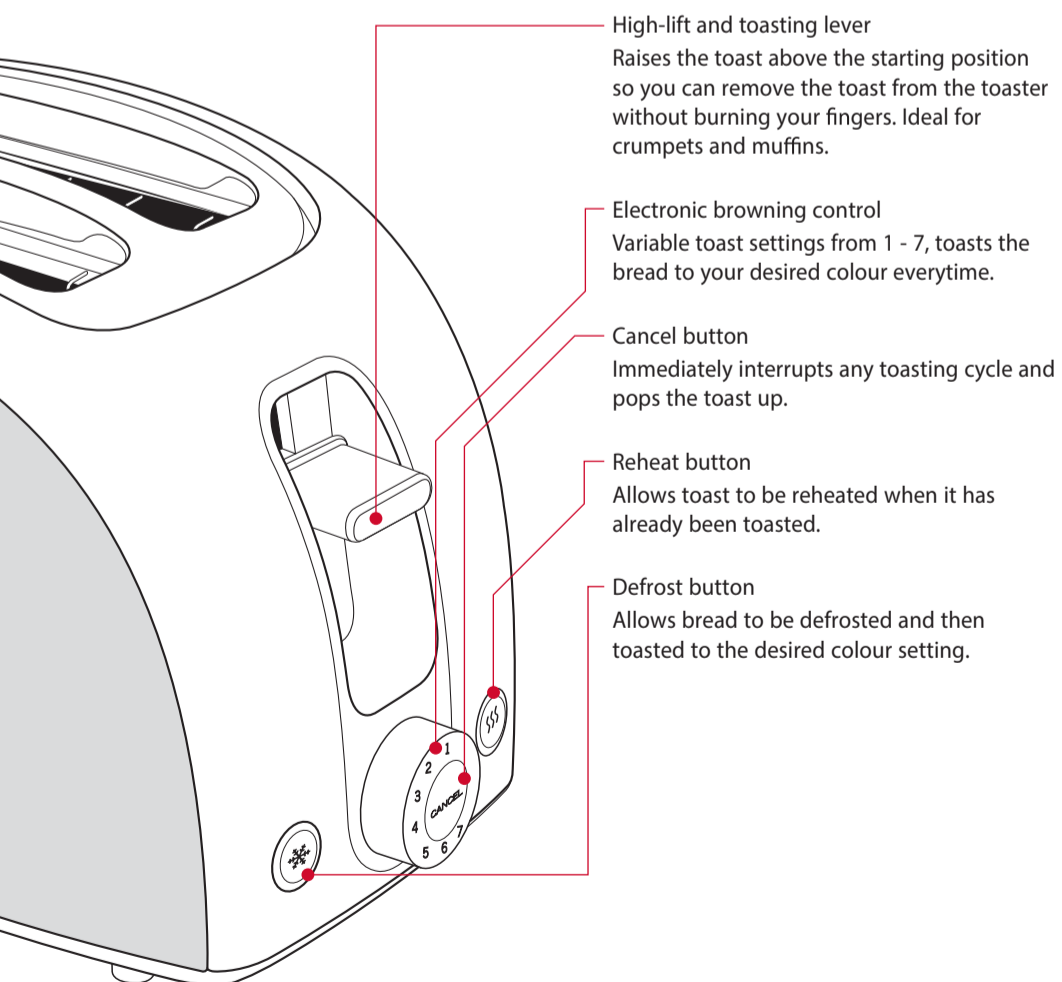
### Cord storage

The cord can be wrapped underneath for safe and convenient storage.



1

2



**High-lift and toasting lever**  
Raises the toast above the starting position so you can remove the toast from the toaster without burning your fingers. Ideal for crumpets and muffins.

**Electronic browning control**  
Variable toast settings from 1 - 7, toasts the bread to your desired colour everytime.

**Cancel button**  
Immediately interrupts any toasting cycle and pops the toast up.

**Reheat button**  
Allows toast to be reheated when it has already been toasted.

**Defrost button**  
Allows bread to be defrosted and then toasted to the desired colour setting.


## Using your toaster

Plug the toaster into a 230-240 volt AC power outlet and switch the power on.


### Toasting Bread

1. Position the bread into the bread slot.
2. Select the desired colour setting using the Electronic Browning Control.  
**Important:** Do not toast stale bread, rice crackers or similar on a high setting as they may catch fire.
3. Push the Toasting Lever down to commence the toasting cycle.
4. When the desired browning is achieved, the toaster will automatically turn off and pop the toast up. If you need to remove the toast before the cycle is complete, then press the Cancel button. The Cancel button will immediately interrupt the toasting cycle and pop the toast up.
5. To remove small pieces of toast or bagels, use the High-lift Lever to lift the toast above the starting position. This will prevent burning your fingers as you remove the toast.

### Toasting frozen bread

Select the desired colour setting using the Electronic Browning Control. Push the Toasting Lever down to begin the toasting cycle and then press the Frozen button  which will illuminate to indicate that it has been selected. This feature allows bread to be defrosted and then toasted to the desired colour setting.

### Reheating toasted bread

Turn the Electronic Browning Control dial to setting 1. Push the Toasting Lever down to begin the toasting cycle and then select the Reheat button  which will illuminate to indicate that it has been selected. This feature allows toast to be reheated when it has already been toasted.

### Toasting muffins or bagels

Ensure muffins or bagels are cut into even halves and fit freely into the bread slot. Do not force them into the toaster. If your bread jams in the toaster, switch the power off, remove the plug and ease the bread out of the toaster.

**WARNING:** Never attempt to extract jammed toast, muffins, bagels or crumpets with a knife or any other metal object, as contact with the live element may cause electrocution.

## Care and cleaning

Always turn the power OFF and remove the plug from the power outlet after use and before cleaning your toaster.

To clean the exterior.  
Wipe exterior with a slightly dampened cloth and polish with a soft dry cloth.

Do not use metal scourers or abrasives as this may scratch the exterior surface.

### Removable Crumb Tray.

To remove the crumbs, simply slide out the tray, empty and place it back in the toaster. **Important:** Clean the crumb tray regularly. Do not allow crumbs to accumulate, as they may cause a potential fire hazard.

To clean the toaster interior.  
Clean inside the toaster regularly. To do this, unplug the appliance, turn it upside down over the sink and gently shake all the crumbs out.

3

4

5